

## Installation, operation and maintenance instructions



The Diesel Air Heater operating independently of the engine

**Version 4.0**

# Introduction

## Contents

Chapter	Title	Contents
1	Introduction	<ul style="list-style-type: none"><li>• Contents</li><li>• Concept of this manual</li><li>• Special text structure, presentation and picture symbols</li><li>• Important information before starting work</li><li>• Safety instructions for installation and operation</li></ul>
2	Product information	<ul style="list-style-type: none"><li>• Scope of supply</li><li>• Technical data of Air Heater D5</li><li>• Main dimensions</li></ul>
3	Installation	<ul style="list-style-type: none"><li>• Installation and location</li><li>• Installation location</li><li>• Possible installation Positions</li><li>• Mounting and fastening</li><li>• Heater air system</li><li>• Exhaust system</li><li>• Combustion air system</li><li>• Fuel supply</li></ul>
4	Troubleshooting Maintenance Service	<ul style="list-style-type: none"><li>• Electrical Diagram</li><li>• The Interior Structural Illustration</li></ul>

# **1 Introduction**

## **Concept of this manual**

---

This manual aims to support the installation workers installing the heater and to provide the user with all important information about the heater. The manual has been divided into 5 chapters to make it easier to find the corresponding information quickly.

### **1 Introduction**

Here you will find important introductory information about installation of the heater and about the structure of the manual.

### **2 Product information**

Here you will find information about the scope of supply, the technical data and the dimensions of the heater.

### **3 Installation**

Here you will find important information and instructions referring to installation of the heater.

### **4 Troubleshooting / maintenance / service**

This section contains information on possible faults and malfunctions, troubleshooting, maintenance and the service hotline.

# 1 Introduction

## Special text structure, presentation and picture symbols



### **Danger!**

This picture symbol with the remark "Danger!" refers to the risk of a fatal danger to life and limb. Under certain circumstances, failure to comply with these instructions can result in severe or life-threatening injuries.



### **Caution!**

This picture symbol with the remark "Caution!" refers to a dangerous situation for a person and / or the product.

Failure to comply with these instructions can result in injuries to people and / or damage to machinery.

### **Please note!**

These remarks contain application recommendations and useful tips for installation of the heater.



### **Caution!**

#### **Safety instructions for application and proper purpose**

- The heater must only be used and operated for the range of application stated by the manufacturer in compliance with the "Operating instructions" included with every heater.

## Important information before starting work

### **Range of application of the heater**

The Air Heater operating independently of an engine is intended for installation in the following vehicles, depending on its heating output:

- Vehicles of all kinds (max 8 seats)
- Construction machinery
- Agricultural machinery
- Boats, ships and yachts (only diesel heaters)
- Camper vans

### **Please note!**

- The camper heaters are intended for installation in camper vans.
- The heaters (only diesel heaters, 24 volt) can be installed in vehicles used for the transport of dangerous goods as per ADR.
- The current controller is to be replaced by a special controller when the heater is to be used to heat the freight compartment / cargo (order no. see heater price list or spare parts list).

### **Purpose of the heater**

- Pre-heating, de-misting windows
- Heating and keeping the following warm:
  - Driver and working cabs, Ship's cabins
  - Freight compartments
  - Passenger and crew compartments
  - Camper vans

On account of its functional purpose, the heater is **not** permitted for the following applications:

- Long-term continuous operation, e.g. for preheating and heating of:
  - Residential rooms
  - Garages
  - Work huts, weekend homes and hunting huts
  - Houseboats, etc.
- Heating or drying:
  - Living creatures (people or animals) by blowing hot air directly at the subject
  - Objects
  - Blowing hot air into containers

# 1 Introduction

---

## • Arrangement of the heater

- Parts of the structure and other components near the heater must be protected from excess heat exposure and possible contamination from fuel or oil.
- The heater must not pose a fire hazard even when it overheats.  
This requirement is deemed to be fulfilled when adequate clearance to all parts is observed during installation, sufficient ventilation is provided and fire-proof materials or heat plates are used.
- The heater must not be mounted in the passenger compartment of vehicles in class M<sub>2</sub> and M<sub>3</sub>. But a heater in a hermetically sealed enclosure which otherwise complies with the conditions stated above may be used.
- The factory nameplate or duplicate must be affixed so that it can still be easily read when the heater is installed in the vehicle.
- All appropriate precautions must be taken when arranging the heater to minimise the risk of injuries to persons or damage to other property.

## • Fuel supply

- The fuel intake connection must not be located in the passenger compartment and must be sealed with a properly closing lid to prevent any fuel leaks.
- In heaters for liquid fuel where the heater fuel is separate from the vehicle fuel, the type of fuel and intake connection must be clearly identified.
- A warning sign is to be fixed to the intake connection indicating that the heater must be switched off before refuelling.

## • Exhaust system

- The exhaust outlet must be arranged so as to prevent any penetration of exhaust fumes into the vehicle interior through the ventilation system, warm air intakes or open windows.  
Exhaust fumes can lead to death.

## • Combustion air intake

- The air for the heater combustion chamber must not be sucked in from the passenger compartment of the vehicle.
- The air intake must be arranged or protected in such a way that it cannot be blocked by other objects.

## • Heater air intake

- The heater air supply must consist of fresh air or circulated air and be sucked in from a clean area not contaminated by exhaust fumes of the drive machine, the combustion heater or any other source in the vehicle.
- The intake pipe must be protected by a grid or other suitable means.

## • Hot air outlet

- The hot air pipes within the vehicle must be arranged or protected in such a way that there is no risk of injury or damage if they are touched.
- The air outlet must be arranged or protected in such a way that it cannot be blocked by any objects.

## • Fuel tanks

Fuel tanks for supplying the heater shall conform to the following regulations:

- In the event of any leakage, the fuel shall drain to the ground without coming into contact with hot parts of the vehicle or the load;
- fuel tanks containing petrol shall be equipped with an effective flame trap at the filler opening or with a closure enabling the opening to be kept hermetically sealed.

## • Exhaust system and exhaust pipe layout

The exhaust system as well as the exhaust pipes shall laid out or protected to avoid any danger to the load through heating or ignition. Parts of the exhaust system situated directly below the fuel tank (diesel) shall have a clearance of at least 100 mm or be protected by a thermal shield.

## • Switching on the combustion heater

The combustion heater may only be switched on manually. Automatic switching on via a programmable switch is not permitted.

# 1 Introduction

## Safety instructions for installation and operation



### **Danger!**

#### **Risk of injury, fire and poisoning!**

- The heater must only be started up when the maintenance flap is closed and the outlet hood is mounted in position.
- The maintenance flap must not be opened during operation.
- Disconnect the vehicle battery before commencing any kind of work.
- Before working on the heater, switch the heater off and let all hot parts cool down.
- The heater must not be operated in closed rooms, e.g. in the garage or in a multi-storey car park.
- Adjustable hot air outlets must always be adjusted so that they cannot blow hot air directly at living creatures (people, animals) or objects sensitive to temperature (loose and / or fastened).



### **Caution!**

#### **Safety instructions for installation and operation!**

- The year of initial commissioning must be marked on the nameplate.
- The heat exchanger of air heaters is a component subject to high thermal loads which must be replaced 10 years after initial commissioning of the heater. In addition, the installation date must be entered on the plate "original spare part" enclosed with the heat exchanger must. Then affix the plate next to the nameplate on the heater.
- The heater must only be installed by a JE partner authorised by the manufacturer according to the instructions in this manual and possibly according to special installation recommendations; the same applies to any repairs to be carried out in the case or repairs or guarantee claims.

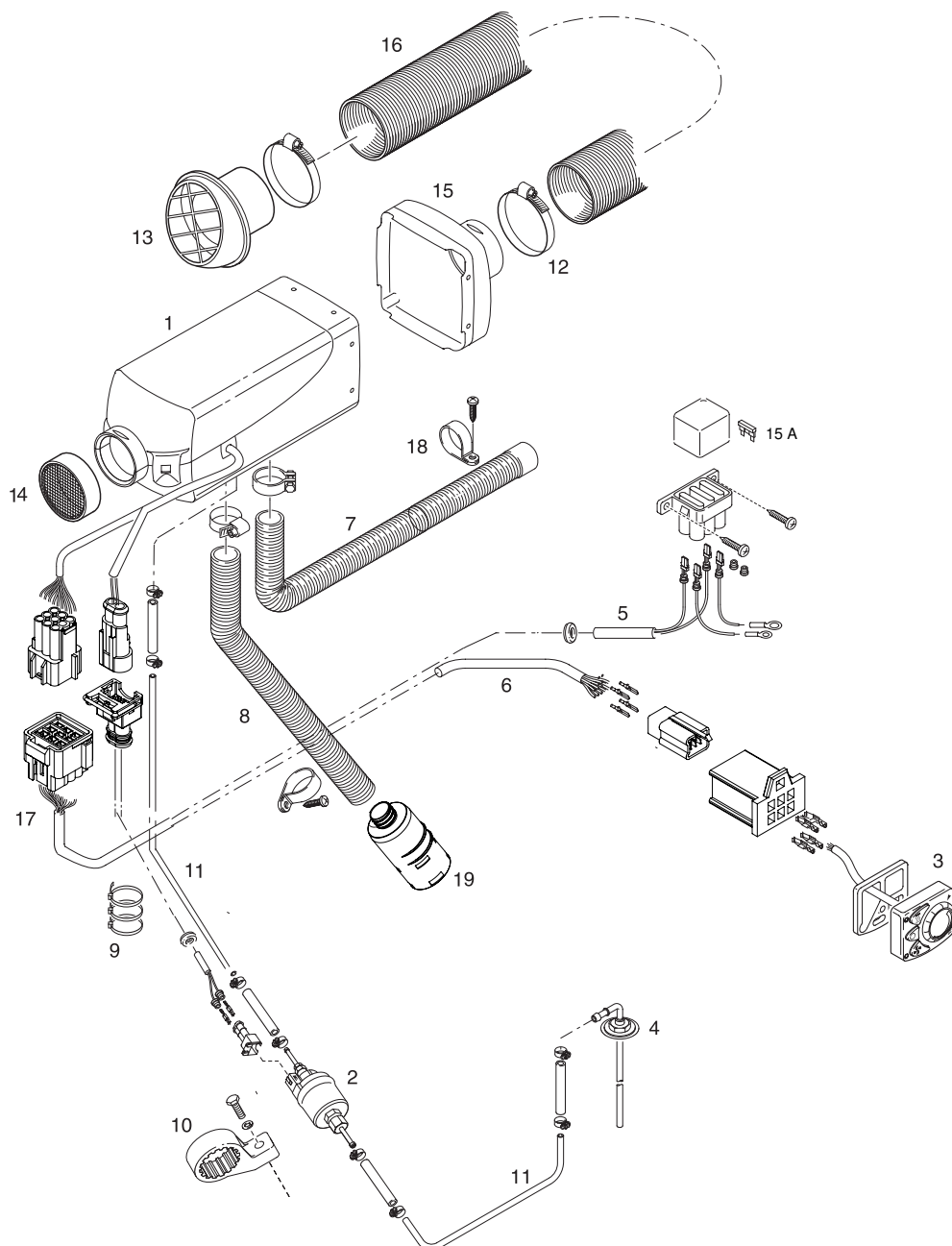
- The following measures are not allowed:
  - Changes to components relevant to the heater.
  - Nonconformities in installation or operation from the statutory regulations, safety instructions or specifications relevant to safe operation as stated in the installation instructions and operating instructions. This applies in particular to the electrical wiring, fuel supply, combustion air system and exhaust system.
- Only original accessories and original spare parts must be used during installation or repairs.
- When carrying out electric welding on the vehicle, the plus pole cable at the battery should be disconnected and placed at ground to protect the controller.
- The heater must not be operated where there is a risk of an accumulation of flammable vapours or dust, for example close to
  - fuel depot
  - coal depot
  - wood depot
  - grain depots etc.
- The heater must be switched off when refuelling.
- When the heater is mounted in a safety housing etc., the installation compartment of the heater is not a stowage compartment and must be kept clear. In particular fuel canisters, oil cans, spray cans, gas cartridges, fire extinguishers, cleaning rags, items of clothing, paper etc. must not be stored or transported on or next to the heater.
- Defect fuses must only be replaced by fuses with the prescribed rating.
- If fuel leaks from the heater fuel system, arrange for the damage to be repaired immediately by a JE service partner.
- After-running of the heater must not be interrupted prematurely e.g. by pressing the battery disconnecting switch, apart from in the case of an emergency stop.

## **Accident prevention**

General accident prevention regulations and the corresponding workshop and operation safety instructions are to be observed.

## 2 Product information

### Scope of supply of Heater, Installation Kits and Set Instruments



## 2 Product information

### Scope of supply for heater and installation kits

#### Pict.-No. Designation

- 1 Heater
- 2 Dosing Pump
- 3 Rotary Controller (Optional)
- 4 Fuel Dip Tube
- 5 Fuse
- 6 Wiring Harness
- 7 Flexible Exhaust Pipe
- 8 Air Intake Pipe
- 9 Clamp
- 10 Bracket of Dosing Pump
- 11 Fuel Hose
- 12 Clamp of Air Duct
- 13 Rotary Air Outlet
- 14 Safty Grid
- 15 Rear Housing
- 16 Air Duct
- 17 Connector
- 18 P Shape Clamp
- 19 Air Intake Silencer





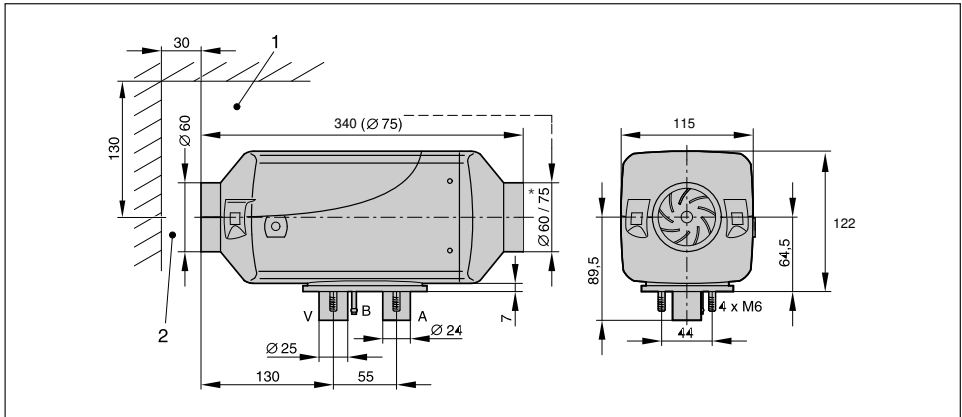
## 2 Product information

### Technical data

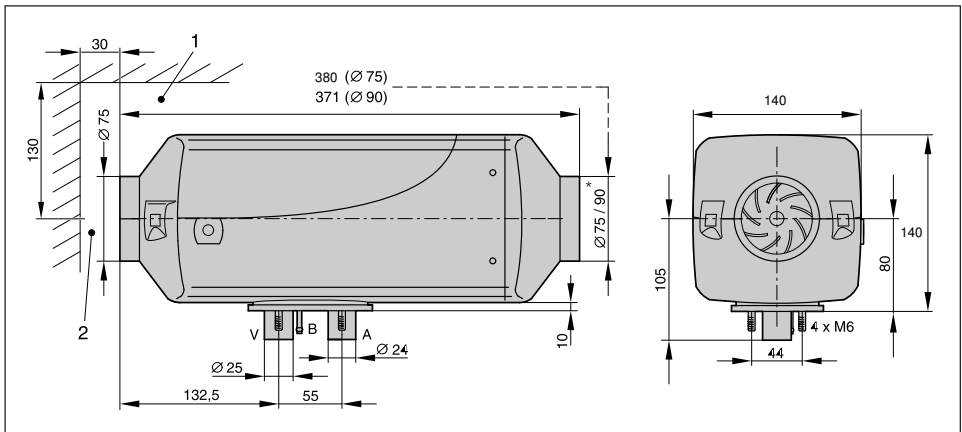
Power (Watt)	2000		5000
Heating medium	Air		Air
Fuel consumption (l/h)	0.28-0.10		0.51-0.16
Fuel	Diesel		Diesel
Weight	approx. 2.7 kg		approx. 4.5 kg
Heater air flow rate without counterpressure (kg/h)	105		185
Elektr. power consumption (watt) in operation (12 and 24 volt) at start (12 and 24 volt)	8-34		7-40
Rated voltage	12 or 24 volt		12 or 24 volt
Main dimensions	340*115*122		380*140*140
Operating range Lower voltage limit:  switches off the heater when the voltage limit is reached.	approx. 10.5 volt resp. 18 volt Undervoltage protection trigger time: 20 seconds		
Upper voltage limit: An upervoltage protection in the controller switches off the heater when the voltage limit is reached.	approx. 18 volt resp. 28 volt Overvoltage protection trigger time: 20 seconds		
Fuel "Fuel quality" and "Fuel at low temperatures"	Commercially available diesel fuel (DIN EN 590)		
Tolerable ambient temperature	Operation		Not running
	Heater	-40 °C to +70 °C	-40 °C to +85 °C
	Dosing pump	-40 °C to +50 °C	-40 °C to +125 °C
Maximum air intake temperature	+40 °C		
Ventilation mode	Only Available with Alpine Heater		

## 2 Product information

### Main dimensions 2000



### Main dimensions 5000



- 1 Minimum installation clearance (space) for opening the lid and for dismantling the glow plug and the controller.
- 2 Minimum installation clearance (space) for intake of heater air.

A = Exhaust  
B = Fuel  
V = Combustion air

## 3 Installation

### Installation and location

The heater is suitable and certified for installation in parts of vehicles used by persons.

Installation in the cab or passenger compartments of coaches or buses with more than 9 seats is **not** allowed.

When installing in compartments used by persons, the exhaust, combustion air and fuel pipes in these areas must not have any detachable connections and must be routed splash-waterproof in the breakthroughs. For this reason, the heater can be mounted with its foot using the flange seal in the foot to the vehicle floor or to an outer wall of the vehicle.

The electronic control is integrated in the heater which makes wiring during installation much easier.

#### Please note!

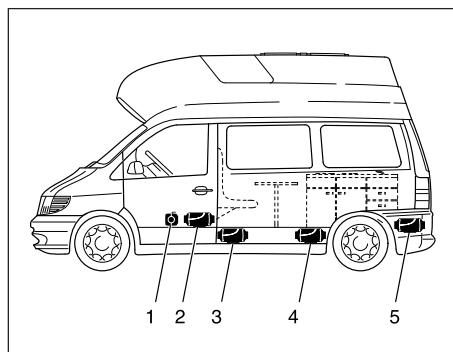
- When installing the heater, always make sure there is sufficient clearance left for intake of the heater air and for dismantling the glow plug and controller (see page 15 "main dimensions").

### Installation position

#### Installation position in a camper van

In a camper van, the heater is preferably installed in the inner compartment or luggage compartment.

If it cannot be installed in the inner compartment or luggage compartment, the heater can also be fitted to the vehicle floor from underneath.



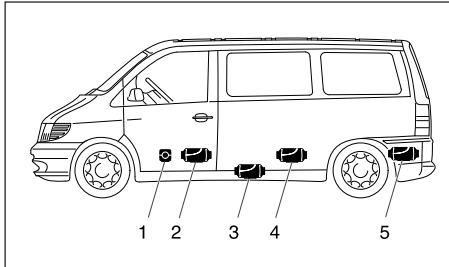
- 1 Heater in front of the passenger seat
- 2 Heater between the driver's seat and the passenger seat
- 3 Heater under the vehicle floor
- 4 Heater under the back seat
- 5 Heater in the boot

### 3 Installation

#### Installation

##### Installation in a car or people carrier

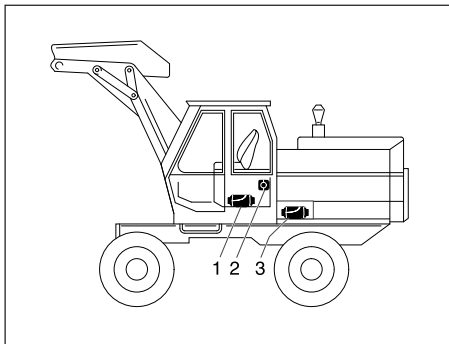
In a car or people carrier, the heater is preferably installed in the passenger compartment or boot. If it is not possible to install the heater in the passenger compartment or boot, the heater can also be mounted under the vehicle floor.



- 1 Heater in front of the passenger seat
- 2 Heater between the driver's seat and the passenger seat
- 3 Heater under the vehicle floor
- 4 Heater under the back seat
- 5 Heater in the boot

##### Installation in an excavator cab (only diesel heaters)

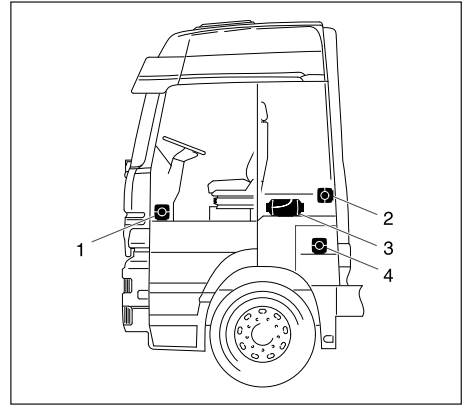
In an excavator, the heater is preferably installed in the cab. If it is not possible to install the heater in the cab, the heater can also be installed in a storage box outside the cab.



- 1 Heater in the seat box
- 2 Heater on the cab rear wall
- 3 Heater in a protective case

##### Installation in a truck (only diesel heaters)

In a truck, the heater is preferably installed inside the driver's cab. If it is not possible to install the heater inside the driver's cab, it can also be mounted in the tool box or in a storage box.



- 1 Heater in the passenger's foot room
- 2 Heater on the cab rear wall
- 3 Heater under the bed
- 4 Heater in the tool box

#### Please note!

- The installation suggestions made in the installation instructions are just examples. Other installation locations are possible, as long as they correspond to the installation requirements stated in these instructions.
- Other installation information (e.g. for boats and ships) is available from the manufacturer on request.
- Observe the tolerable installation position together with the operating and storage temperatures.

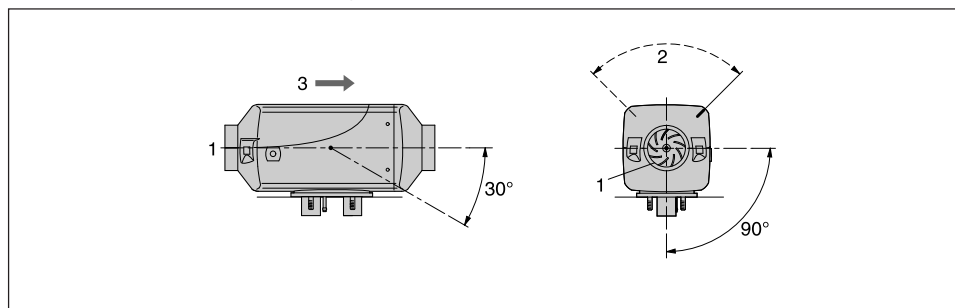
## 3 Installation

### Possible installation positions

The heater is preferably installed in the normal position as shown in the drawing. Depending on the installation conditions, the heater can be tilted by max. 30° (flow direction to the bottom) or turned by max. 90° around its own longitudinal axis (exhaust connection horizontal, glow plug points upwards!).

In the heating mode, the heater can deviate from the shown normal or maximum installation positions by up to +15° in all directions because of a slanting position of the vehicle or boat, without any impaired functions.

### Normal position horizontal (exhaust connection downwards) with tolerable swivel range



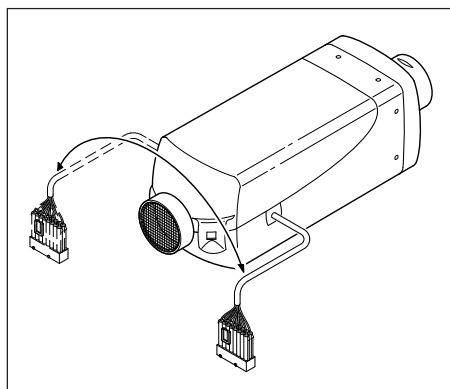
- 1 Heater air intake opening (fan wheel)
- 2 Position of the glow plug
- 3 Direction of flow

### Cable harness connection, right or left

If necessary, the cable harness connection can be changed over to the other side of the heater. To do so, the controller has to be removed and the lower semi-circular cable harness cover unclipped.

The cable harness can then be rerouted in the controller.

Then mount the controller again, position the jacket shell and insert the cable harness bush and the bungs in the corresponding recesses in the lower jacket shell.



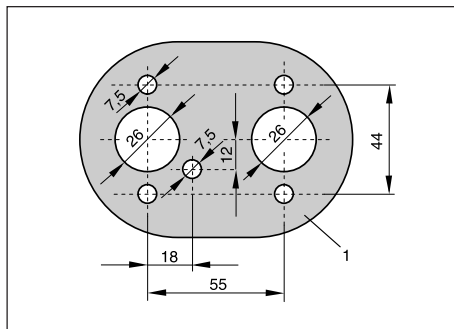
### 3 Installation

#### Mounting and fastening

Make the necessary breakthroughs for exhaust, combustion air and fuel as shown in the hole diagram. The support surface for the heater foot must be flat. An appropriate tool can be purchased from the manufacturer for drilling the breakthroughs and also smoothing the support surface. The hole  $\varnothing$  10.5 mm for the cable harness "dosing pump" is not included in the picture drawing and must be drilled after installation.

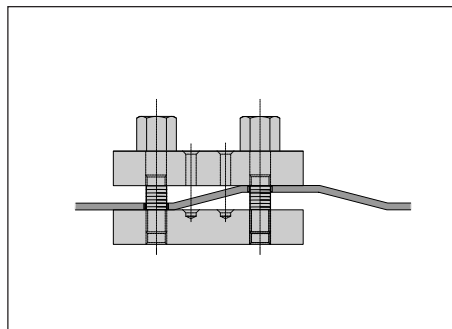
If the sheet metal of the support surface is thinner than 1.5 mm, an additional reinforcement plate will have to be fitted.

#### Picture hole

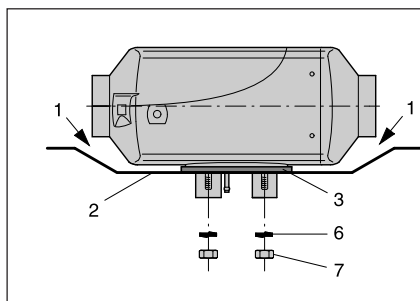


1 Contour of the bearing surface

#### Special tool

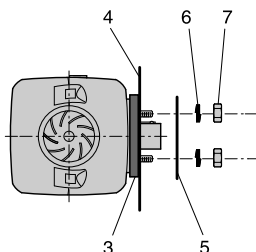


#### Fastening the unit on the vehicle floor



- 1 There must be sufficient clearance between the heater and the vehicle floor – also check that the fan wheel runs freely.
- 2 The mounting surface must be flat and smooth.
- 3 The flange seal must be mounted.

#### Fastening the heater horizontally to the vehicle wall



- 4 The vehicle wall must be flat and smooth.
- 5 Reinforcement plate (if required, see above)
- 6 Spring washer
- 7 Hexagon nut M6 (torque  $5^{+1}$  Nm)

### 3 Installation

#### Heater air system

The universal installation kit includes a flexible pipe, an outflow and a safety grid for the heater air system.



#### **Danger!**

##### **Risk of burning and injuries!**

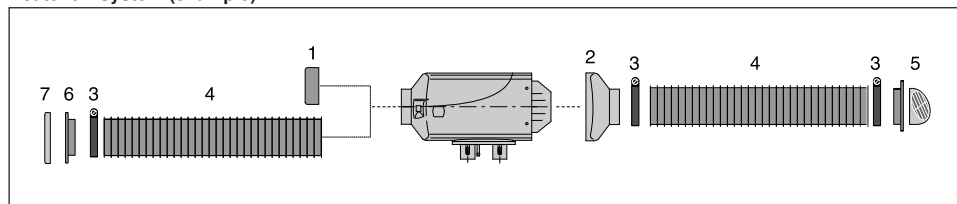
- The hoses of the heater air system and the hot air outlet are to be routed and fastened in such a way that they pose no temperature risk to people, animals or materials sensitive to temperature from radiation / contact or blowing directly. If necessary, a cover is to be fitted to the heater air system or hot air outlet.
- The outflow hood must be fitted on the hot air outflow side.
- A safety grid must be fitted to the heater air intake side and outflow side if no air hoses are mounted, to prevent any injuries from the heater air fan or burns from the heat exchanger.
- High temperatures occur in the heater air system during and after the heater has been working. This is why it is important to avoid working in the vicinity of the heater air system while the heater is working. In such cases, switch the heater off beforehand and wait until all parts have cooled down completely.  
If necessary, wear safety gloves.



#### **Caution!**

- The heater air intake openings must be arranged in such a way that under normal circumstances, it is not possible for exhaust from the vehicle engine and heater to be sucked into the system, or for the heating air to be contaminated with dust, salt spray, etc.
- For circulating air, position the circulating air intake in such a way that the outflowing hot air cannot be directly sucked in again.
- In the event of possible overheating, it is possible for local hot air temperatures of up to max. 150 °C or surface temperatures of up to max. 90 °C to occur immediately before the defect shutdown. Therefore only temperature-resistant hot air hoses approved by us must be used for the heater air system!
- When checking the functions, the mean outflow temperature measured after the heater has been running about 10 minutes at approx. 30 cm from the outlet should not exceed 110 °C (at an intake temperature of approx. 20 °C).
- If there is a risk of the driver and passengers touching the heater when the vehicle is being driven normally, a contact protection device must be fitted.

#### Heater air system (example)



- 1 Safety grid
- 2 Outflow hood
- 3 Hose clip
- 4 Flexible hose

- 5 Rotating outflow
- 6 Connection fitting
- 7 Safety grid

## 3 Installation

### Exhaust system

#### Mounting the exhaust system

The universal installation kit includes a flexible exhaust pipe, inner Ø 24 mm, 600 mm long and an exhaust silencer. The flexible exhaust pipe can be shortened to 20 cm or lengthened to max. 2 m, depending on the installation conditions.

Fasten the exhaust silencer to a suitable position in the vehicle.

Route the flexible exhaust pipe from the heater to the exhaust silencer and fasten with pipe clips. Use a pipe clip to fix a short exhaust pipe end (with end sleeve) to the exhaust silencer.



#### Caution!

##### Safety instructions!

The whole exhaust system gets very hot during and immediately after the heater has been working. This is the reason why the exhaust system must be installed according to these instructions.

- The exhaust outlet must end in the open air.
- The exhaust pipe must not protrude beyond the lateral limits of the vehicle.
- Install the exhaust pipe sloping slightly downwards. If necessary, make a drain hole approx. Ø 5 mm at the lowest point to drain off condensation.
- Important functional parts of the vehicle must not be impaired (keep sufficient clearance).
- Mount the exhaust pipe with sufficient clearance to heat-sensitive parts. Pay particular attention to fuel pipes (plastic or metal), electrical cables and brake hoses etc.!
- Exhaust pipes must be fastened safely (recommended clearance of 50 cm) to avoid damage from vibrations.
- Route the exhaust system so that the emitted fumes are not sucked in with the combustion air.
- The mouth of the exhaust pipe must not get clogged by dirt and snow.
- The mouth of the exhaust pipe must not point in the direction of travel.
- Always fasten the exhaust silencer to the vehicle.



#### Danger!

##### Risk of injuries and burns!

Every type of combustion produces high temperatures and toxic exhaust fumes. This is the reason why the exhaust system must be installed according to these instructions.

- Do not perform any work on the exhaust system while the heater is working.
- Before working on the exhaust system, first switch the heater off and wait until all parts have cooled down completely, wear safety gloves if necessary.
- Do not inhale exhaust fumes which lead to death

#### Please note!

- Comply with the regulations and safety instructions for this chapter on page 4 – 7.
- If a silencer is fitted, the exhaust end pipe must be much shorter than the flexible exhaust pipe between the heater and the exhaust silencer.
- Small arrows indicating the direction of flow have been cast into the fittings to differentiate between the combustion air and the exhaust fittings at the heater (see diagram page 23).



### 3 Installation

#### Combustion air system

##### Mounting the combustion air system

The universal installation kit includes a flexible combustion air hose, inner Ø 25 mm, 100 mm long. If necessary the flexible combustion air hose can be shortened by 20 cm or lengthened by max. 2 m depending on the installation conditions. Fasten the combustion air hose to the heater with a pipe clip and at suitable points with hose clips or cable ties.

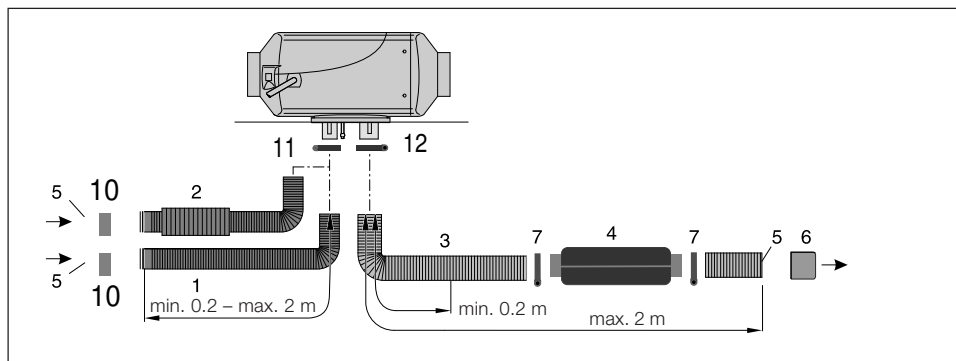
The installation kit for camper heaters includes a combustion air intake silencer with a flexible connection hose (inner diameter 25 mm). Fasten the flexible connection hose to the heater with a pipe clip and fasten the combustion air intake silencer with hose clips or cable ties at suitable points.



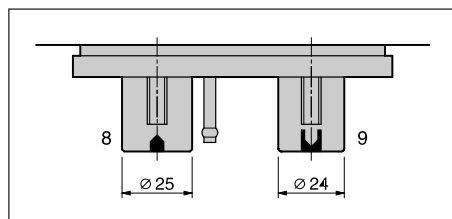
#### Caution!

##### Safety instructions for the combustion air system!

- The combustion air opening must be free at all times.
- Position the combustion air intake to be sure that exhaust fumes cannot be sucked in with the combustion air.
- Do not arrange the combustion air intake to pointing against the wind blast.
- The combustion air intake must not get clogged with dirt and snow.
- Install the combustion air intake system sloping slightly downwards. If necessary, make a drain hole approx. Ø 5 mm at the lowest point to drain off condensation.



- |  |                               |
|--|-------------------------------|
| 1 Combustion air hose, di = 25 mm                                    | 10 Combustion Air End Housing |
| 2 Combustion air silencer,   | 11 Hose Clamp                 |
| 3 Exhaust pipe, de = 24 mm   | 12 Hose Clamp                 |
| 4 Exhaust silencer   |                               |
| 5 Intake / outlet opening – protect from wind, snow, dirt and water. |                               |
| 6 End sleeve, combustion air   |                               |
| 7 End sleeve, exhaust  |                               |
| 8 Combustion air connection  |                               |
| 9 Exhaust connection   |                               |



### 3 Installation

#### Fuel supply

##### Mounting the dosing pump, routing the fuel pipes and mounting the fuel tank

The following safety instructions must be observed when mounting the dosing pump, routing the fuel pipes and mounting the fuel tank.

Deviations from the instructions stated here are not allowed.

Failure to comply can result in malfunctions.



#### **Danger!**

##### **Risk of fire, explosion, poisoning and injuries!**

Caution when handling fuel.

- Switch off the vehicle engine and heater before refuelling and before working on the fuel supply.
- No naked lights when handling fuel.
- Do not smoke.
- Do not inhale fuel vapours.
- Avoid any contact with the skin.

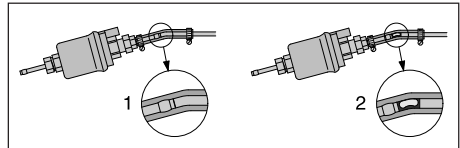


#### **Caution!**

##### **Safety instructions for routing the fuel pipes!**

- Only use a sharp knife to cut off fuel hoses and pipes.  
Interfaces must not be crushed and must be free of burrs.
- The fuel pipe from the dosing pump to the heater should be routed at a continuous rise.
- Fuel pipes must be fastened safely to avoid any damage and / or noise production from vibrations (recommended clearance of approx. 50 cm).
- Fuel pipes must be protected from any mechanical damage.

- Route the fuel pipes so that any distortion of the vehicle, engine movements etc. cannot have any lasting effect on the service life.
- Parts carrying fuel must be protected from interfering heat.
- Never route or fasten the fuel pipes to the heater or vehicle exhaust system. When the systems cross, always ensure there is a sufficient heat clearance. If necessary, install heat deflection plates.
- Dripping or evaporating fuel must never be allowed to collect on hot parts or ignite on electric systems.
- When connecting fuel pipes with a fuel hose, always mount the fuel pipes in a butt joint to prevent any bubbles from forming.



- 1 Correct connection
- 2 Incorrect connection – bubble formation

##### **Safety instructions for fuel pipes and fuel tanks in buses and coaches**

- In buses and coaches, fuel pipes and fuel tanks must not be routed through the passenger compartment or driver's cab.
- Fuel tanks in buses and coaches must be positioned in such a way that the exits are not in direct danger from a possible fire.

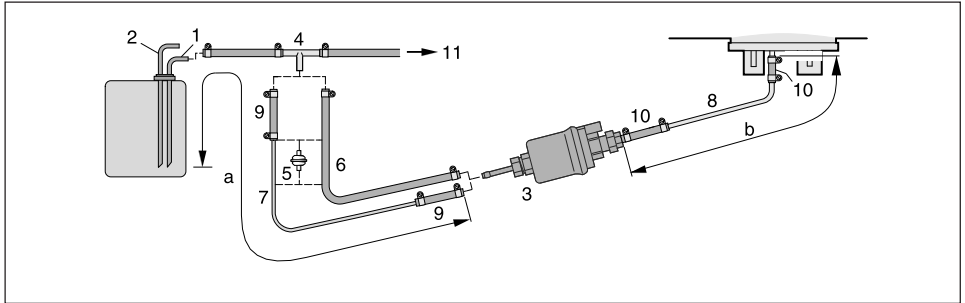
#### **Please note!**

Comply with the regulations and safety instructions for this chapter on page 4 – 7.

### 3 Installation

#### Fuel supply

**Fuel feed point with T-piece from the fuel supply line from the tank fitting to the vehicle engine**



- 1 Fuel feed pipe from tank connection
- 2 Dosing pump
- 3 Fuel pipe, 5 x 1.25 (di = Ø 2 mm)
- 4 Fuel hose, 3.5 x 4.5
- 5 Fuel hose, 4.5
- 6 Fuel filter – only necessary for contaminated fuel.
- 7 Fuel pipe, 4 x 1.25 (di = Ø 1.5 mm)

#### Possible pipe lengths

##### Intake side

a = max. 5 m

M

a = max. 2 m

##### Pressure side

##### Diesel heaters

- For suction pipe di = Ø 2 mm, b = max. 6 m
- For suction pipe di = Ø 5 mm, b = max. 10 m

##### Petrol heater

- b = max. 4 m



#### Caution!

#### Safety instructions for the fuel supply!

- The fuel must not be conveyed by gravity or overpressure in the fuel tank.
- Withdrawal of fuel after the vehicle's fuel pump is not allowed.
- When the pressure in the fuel pipe is more than 0.2 bar to max. 4.0 bar, use a pressure reducer (order no. 22 1000 20 08 00) or separate tank connection.
- When the pressure in the fuel pipe is more than 4.0 bar or there is a non-return valve in the return pipe (in the tank), a separate tank connection must be used.
- When using a T-piece in a plastic pipe, always use support sleeves in the plastic. Connect the T-piece and the plastic pipe with corresponding fuel hoses and secure with hose clips.

### 3 Installation

#### Fuel supply

##### Installation position of the dosing pump

Always mount the dosing pump with the pressure side rising upwards. Every installation position over  $15^\circ$  is allowed, although an installation position between  $15^\circ$  and  $35^\circ$  is preferable.

##### Possible suction and pressure height of the dosing pump

Pressure height from vehicle tank to dosing pump:  
a = max. 3000 mm

Intake height in pressure-less vehicle tank:  
b = max. 1000 mm for diesel  
b = max. 500 mm for petrol

Intake height in vehicle tanks with withdrawal by negative pressure (valve with 0.03 bar in tank cap):  
b = max. 400 mm

Pressure height of the dosing pump to the heater:  
c = max. 2000 mm

#### Please note!

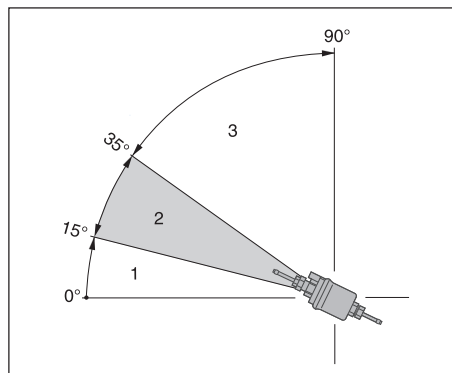
Check tank venting.



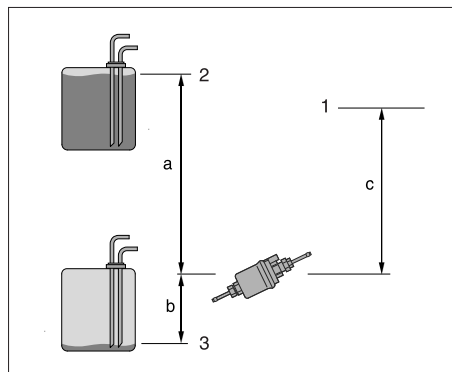
#### Caution!

##### Safety instructions for installing the dosing pump

- Always mount the dosing pipe with the pressure side rising upwards – minimum incline  $15^\circ$ .
- Protect the dosing pump and filter from intolerable heat, do not mount near to the silencers and exhaust pipes.



- 1 Installation position between  $0^\circ$  and  $15^\circ$  is not allowed.
- 2 Preferred installation position in range  $15^\circ$  to  $35^\circ$ .
- 3 Installation position in range  $35^\circ$  to  $90^\circ$  is allowed.



- 1 Connection to heater
- 2 Max. fuel level
- 3 Min. fuel level

## 3 Installation

### Fuel supply

#### Fuel quality for petrol heaters

The heater runs smoothly on standard commercial quality petrol in accordance with DIN EN 228, which you use to run your vehicle engine.

#### Fuel quality for diesel heaters

- The heater runs smoothly on standard commercial quality diesel in accordance with DIN EN 590, which you use to run your vehicle engine.
- In special cases (above 0 °C), the heater can also run on fuel oil EL or paraffin.
- Refineries and fuel service stations automatically adjust the fuel to normal winter temperatures (winter diesel). This means that difficulties are only to be expected for extreme drops in temperature, as also apply to the vehicle engine. Please also refer to the vehicle manual.
- If the heater is run from a separate tank, please comply with the following rules:  
For temperatures above 0 °C, any kind of diesel fuel as per DIN EN 590 can be used.
- If no special diesel fuel is available for low temperatures, then paraffin or petrol should be mixed with the fuel according to the following table:

Temperature	Winterdiesel	Addition
0 °C to -25 °C	100 %	–
-25 °C to -40 °C	50 %*	50 % paraffin or petrol

\* or 100 % special cold diesel fuel (Arctic diesel)

#### Please note!

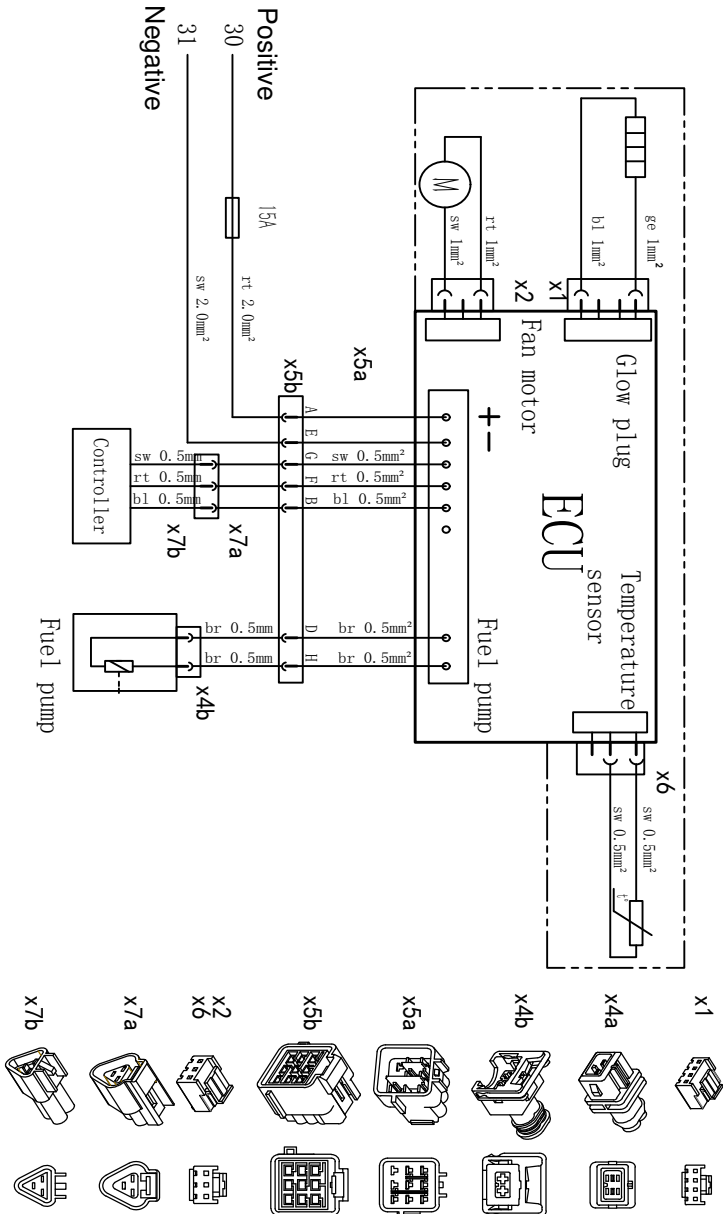
- Mixtures with used oil are **not** allowed!
- After refuelling with winter or cold diesel or the listed blends, the fuel pipes and the dosing pump must be filled with the new fuel by letting the heater run for 15 mins.!

#### Please note!

- When using 100 % biodiesel, the heater should be operated twice a year with diesel fuel (in the middle and at the end of a heating period) in order to burn off any possible biodiesel residues deposited.  
To do so, let the vehicle tank run almost empty and fill with diesel fuel without adding any biodiesel.  
While running on this tank filling, switch the heater on 2 to 3 times for 30 minutes at a time at the highest temperature setting.
- When operating with diesel / biodiesel mixtures of up to 50 % biodiesel, intermediate operation with pure diesel fuel is not necessary.

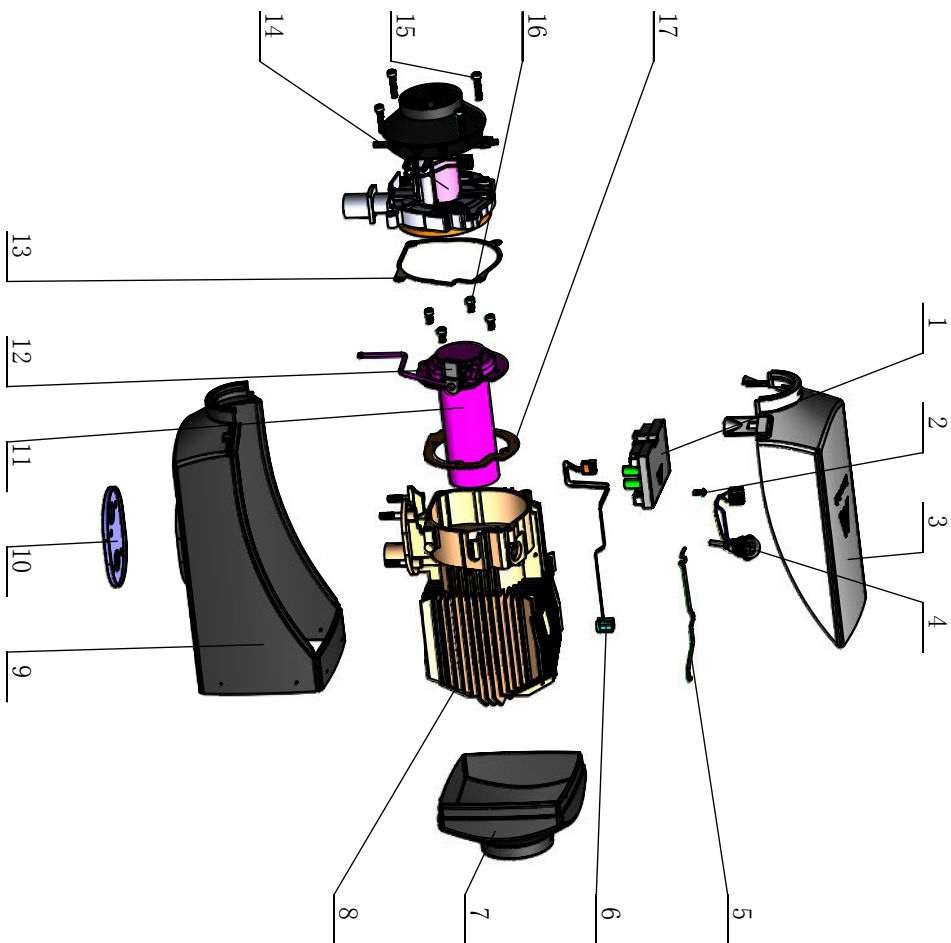
# 4 Troubleshooting / Maintenance / Service

## The Electrical Diagram




## 4 Troubleshooting / Maintenance / Service

### The Interior Structure



Number	BOM Parts	Quantities
1	Mother Board	1
2	Bolt M4*10	1
3	Upper Housing	1
4	Glow Plug	1
5	Sensor Clip	1
6	Temperature Sensor	1
7	Rear Housing	1
8	Heating Exchanger	1
9	Lower Housing	1
10	Seal Rubber Gasket	1
11	Combustion Chamber	1
12	Burner	1
13	Gasket	1
14	Motor Fan	1
15	Bolt M5*25	4
16	Bolt M5*10	4
17	Gasket	1

LAVANER PRO Controller Operating Instruction		
<b>Control panel standby state</b>  <b>Display description</b>	<p>After the equipment is powered on, the screen will display the setting time interface. Press power key / OK key to enter the week setting interface, and press power key / OK key again to enter the main interface to display heating, ventilation, timing and setting icons. Select the functions to be used according to your needs. After the selected icon flashes, press power key / OK key to enter.</p>	
	<div> <div>Left key</div> <div>Right key</div> <div>Return key</div> <div>Power key/OK key</div>  </div>	
<b>Key operation instruction</b> (When the main interface is displayed)	Stand-by state	Short Press the power key / OK key: enter the heating time setting interface, and press power key / OK key again to start the heating
		<b>Left key:</b> Select
		<b>Right key:</b> Select
	Power-on status	Press and hold the power key / OK key: the panel displays off after shutdown.
		<b>Left key:</b> Level + 1 / Temperature + 1
		<b>Right key:</b> Level - 1 / Temperature - 1
<b>Ventilation</b>	<p>After the selected icon (FAN) flashes, press power key / OK key to enter, adjust the running time according to different needs. Press the left key to reduce the running time, and press the right key to increase the running time. After the running time is set, short press the Power key to start the ventilation. The Fan speed can be adjusted by the left key and the right key from L1 to L9.</p> <p>To stop the ventilation, Press and hold the power key for 3 seconds, the main interface will be displayed and ventilation is finished</p>	
<b>Power on / off instruction</b>	Power-on status	Press the power key to enter the running time adjustment interface. Adjust the running time according to different needs. Press the left key to reduce the running time, and press the right key to increase the running time. (The default is infinite $\infty$ time) The running time can be set in the range of 10-360min. When it is adjusted to 360min, press the right key again to set it to infinite $\infty$ running time. After the running time is set, short press the Power key and enter the heating interface.
	Power-off status	Press and hold the power key for 3 seconds, and the screen will display OFF. After the shutdown process is completed, the main interface will be displayed.
<b>Remote Control matching operation instruction</b>	Stand-by state	<p>Meanwhile, press and hold the left key and the return key for 3 seconds to enter the Remote Control matching interface. Press and hold power key of the Remote Controller to conduct matching. After successful matching, the device will automatically exit the matching interface.</p> <p>Short Press the power key to exit or exit automatically without pressing a key after 20 seconds. A controller can match two Remote Controllers at the same time.</p>
<b>Manual / Automatic mode switching description</b>	Power-on status	Press and hold the return key for 3 seconds to switch the automatic mode. When "30 ° C" is displayed in the upper right corner of the screen, press and hold the key again to switch the manual mode. Display such as "L4" (default manual mode). In the power-on state, press and hold the power key of the Remote Control for 3 seconds to switch the manual / automatic mode cyclically. The switch can be switched again only after an interval of more than 3 seconds.
<b>Manual priming operation instruction</b>	Stand-by state	Press and hold the right key for 3 seconds to enter the manual Priming interface. The default time is "20s". Press the right key to increase the Priming time, and press the left key to decrease the Priming time (the maximum Priming time is 120 seconds). Press the power key to start / stop the Priming, press the return key to exit, and the Priming will automatically exit without action (20s).



<b>Time setting</b> <b>Date setting</b>	Stand-by state	<p>Press the left / right key to select the setting icon and then press the OK key to enter. The flashing clock icon will be displayed. Press the OK key to enter the clock adjustment (24-hour system), and then the flashing 00:00 will be displayed (press the left or right key to adjust). After the clock is set, press the OK key to enter the minute setting to see the flashing minutes (press the left or right key to adjust). After the minute is set, press the OK key to enter the week setting (press the left or right key to adjust), among them, Monday to Sunday is available (MON, TUE. WEN. THR. FRI. SAT, SUN.) After setting the week, press the return key to return to the previous menu or the OK key to return to the main interface.</p>
<b>Timing Settings</b>	Stand-by state	<p>On the main interface, press the left / right key to select P for timing. When the timing icon flashes, press the OK key to enter. There are 5 pre-selected times (p1.p2.p3.p4.p5), which can be set on the same day of the week or on different days of the week. For example, select P1: press the OK key to enter the P1 timing setting interface, and then press the OK key to enter the week selection. (it can be adjusted by pressing the left or right key.) After pressing the OK key, the clock icon will flash. (it can be adjusted by pressing the left or right key.) After pressing the OK key, the minute icon will flash. (it can be adjusted by pressing the left or right key.) Then press the OK key to set the timing running time to infinity by default. If the timing operation time needs to be adjusted, (it can be adjusted by pressing the left or right key.) the operation time can be set to 10-360min. When it is adjusted to 360min, press the right key again to set it to infinite ∞ time operation). Then press the OK key to select ON or OFF through the left / right key. Finally, press the Return key to return the screen to the main interface. When the timing is turned on, there will be an icon showing the timing on, and P1 will be checked. When the pre-selected time operation ends, the √ after P1 will be canceled, which indicates that P1 operation ends.</p> <p>If p2.p3.p4.p5 does not turn on the timing function, the icon prompts to turn off.</p> <p>If want to set the p2.p3.p4.p5, it is also set according to the above operation.</p>
<b>Checking the Status</b>	Power-on status	<p>At the same time, press and hold the left / right key to enter the Status Checking interface. The data is arranged from top to bottom, including the Power Supply Voltage, Glow Plug power, Motor RPM, Heating Exchanger Temperature, Fuel Pump Frequency and Atmospheric Pressure. Press the left and right keys to turn the page.</p>

<b>Screen-off state instruction</b>	In the shutdown state, the screen-off state of the device will be turned on after the key has not been operated for more than 3 minutes. No display after the equipment is off, the screen will be off. In the power-on state, the screen-off state will be turned on after no operation for more than 3 minutes. In the screen off state, if there is a blinking light, then press any key to wake up the Controller		
<b>Error Code and Trouble Shooting</b>	Startup failure	E-01	Two Times failures. Check the fuel supply circuit, air intake and exhaust
	Flame out	E-02	The flame goes out during operation. Check the fuel circuit.
	High voltage	E-03	Voltage continuously higher than 16V for 5 seconds
	Low voltage	E-04	Voltage continuously lower than 10V for 20 seconds
	Air outlet temperature sensor fault	E-05	Air outlet temperature sensor open circuit or short circuit
	Air inlet temperature sensor fault	E-06	Air inlet temperature sensor open circuit or short circuit
	Fuel pump fault	E-07	Fuel pump open circuit or short circuit
	Fan fault	E-08	Fan open circuit or short circuit
	Air outlet overheating fault	E-09	The air outlet temperature sensor detects that the air outlet temperature is greater than 160 °C
	Glow Plug fault	E-10	Glow plug open circuit or short circuit
	Flame sensor overheating fault	E-11	The temperature of aluminum body is greater than 260 °C. Check whether the air outlet is blocked
	Overheating Sensor fault	E-12	Overheating sensor open circuit or short circuit
	Controller and ECU signal interruption	E-13	Check whether the circuit between the controller and ECU is open
	Atmospheric pressure sensor	E-14	Replace the Controller
	Air inlet overheating fault	E-15	The air inlet temperature sensor detects that the air inlet temperature is greater than 50 °C
<b>Error Code clearing</b>	When a fault occurs in standby mode, press and hold the power key to clear the fault display. If the fault has been eliminated, press the power key to start the unit normally. If the fault is not eliminated, the Error Code will still be displayed until the fault is eliminated. See Error Code for details.		



# Certificate of Compliance

No. 1K200731.LTCT62

Test Report no. AH-BE2007016

Certificate's  
Holder:

Lavaner (Beijing) Trading Co., Ltd.  
132205 Building C Tower 1 WangJing SOHO  
ChaoYang District Beijing, China

Certification ECM  
Mark:



Product:  
Model(s):

Air Parking Heater  
Lava 20, Lava50, Lava 20 Portable,  
Lava 50 Portable

Verification to:

Standard:  
EN 61000-6-1:2007,  
EN 61000-6-3:2007+A1-2011

related to CE Directive(s):  
2014/30/EU (Electromagnetic Compatibility)

**Remark:** This document has been issued on a voluntary basis and upon request of the manufacturer. It is our opinion that the technical documentation received from the manufacturer is satisfactory for the requirements of the ECM Certification Mark. The conformity mark above can be affixed on the products accordingly to the ECM regulation about its release and its use.

Additional information and clarification about the Marking:



The manufacturer is responsible for the CE Marking process, and if necessary, must refer to a Notified Body. This document has been issued on the basis of the regulation on ECM Voluntary Mark for the certification of products. RG01\_ECM rev.3 available at: [www.entecerma.it](http://www.entecerma.it)

Issuance date: 31 July 2020

Expiry date: 30 July 2025

Reviewer  
Technical expert  
Amanda Payne



Approver  
ECM Service Director  
Luca Bedonni



Ente Certificazione Macchine Srl

Via Ca' Bella, 243 – Loc. Castello di Serravalle – 40053 Valsamoggia (BO) - ITALY  
☎ +39 051 6705141 ☎ +39 051 6705156 ✉ [info@entecerma.it](mailto:info@entecerma.it) 🌐 [www.entecerma.it](http://www.entecerma.it)

## EU DECLARATION OF CONFORMITY

### Identification of manufacturer:

Lavaner (Beijing) Trading Co., Ltd.

132205 Building C Tower 1 WangJing SOHO ChaoYang District Beijing, China

### Identification of product:

Air Parking Heater: Heating up the vehicle cabin such as the Camper Van, Providing the hot air for comfortable usage in the tent when outing or in the workshop when working

This declaration of conformity is issued under the sole responsibility of the manufacturer.

### The object of the declaration:

Lava 20: LAVANER Pro Diesel 12V 2KW Air Heater

Lava 20: LAVANER Pro Diesel 24V 2KW Air Heater

Lava 50: LAVANER Pro Diesel 12V 5KW Air Heater

Lava 50: LAVANER Pro Diesel 24V 5KW Air Heater

Lava 20 Portable: LAVANER Pro Diesel 12V 2KW Air Heater Portable

Lava 20 Portable: LAVANER Pro Diesel 24V 2KW Air Heater Portable

Lava 50 Portable: LAVANER Pro Diesel 12V 5KW Air Heater Portable

Lava 50 Portable: LAVANER Pro Diesel 24V 5KW Air Heater Portable

The object of the declaration described above is in conformity with the relevant Union harmonisation legislation:

Reference no.	Title
2014/30/EU	Electromagnetic Compatibility

References to the relevant harmonised standards used or references to the other technical specifications in relation to which conformity is declared:

Reference	Title
EN 61000-6-1:2007	Electromagnetic compatibility (EMC) -Part 6-1: Generic standards -Immunity for residential, commercial and light-industrial environments
EN 61000-6-3-2007+A1-2011	Electromagnetic compatibility (EMC) -Part 6-3: Generic standards -Emission standard for residential, commercial and light-industrial environments

Signed for and on behalf of MANUFACTURER

City, Beijing

China / -

*Craig He*



Name of person Craig He

Person's title Sales Director

### **Warranty Terms for Lavaner AIR HEATER:**

The heater warranty terms expire when one of the following is reached:

24 months from the date of purchase;

heater operation reached over 2500 working hours;

The warranty does not apply to defects resulting from:

**improper installation, which is not in accordance with valid, supplied installation instructions or approved original equipment manufacturer (OEM) applications.**

Outside forces: lightning strike, fire, flood, voltage fluctuations, accident; transport damages; usage, storage and transportation conditions have not been met;

if the repair, adjustment or installation of the heater has been conducted by organizations not authorized by Amper Sol d.o.o.

the independent repair or use of spare parts not approved by original manufacturer; use of wrong voltage; failure of the heater due to combustion chamber impurity.

*While warranty is provided to the “original end-user”, it is to be administered and serviced through an authorized by Amper Sol dealer in accordance with the heaters warranty terms.*

*Normal wear of serviceable parts: (filters, gaskets, glow plug screens and fuses are not covered by warranty).*

*If the heater is not working properly contact us via mail:*

*[lavaner@ampersol.com](mailto:lavaner@ampersol.com)*

*Please provide a description of a failure, photos of installation, photos or video of the problem, and invoice number.*

*We will do our best to fix the problem as soon as possible.*

*Lavaner and Amper Sol team.*

